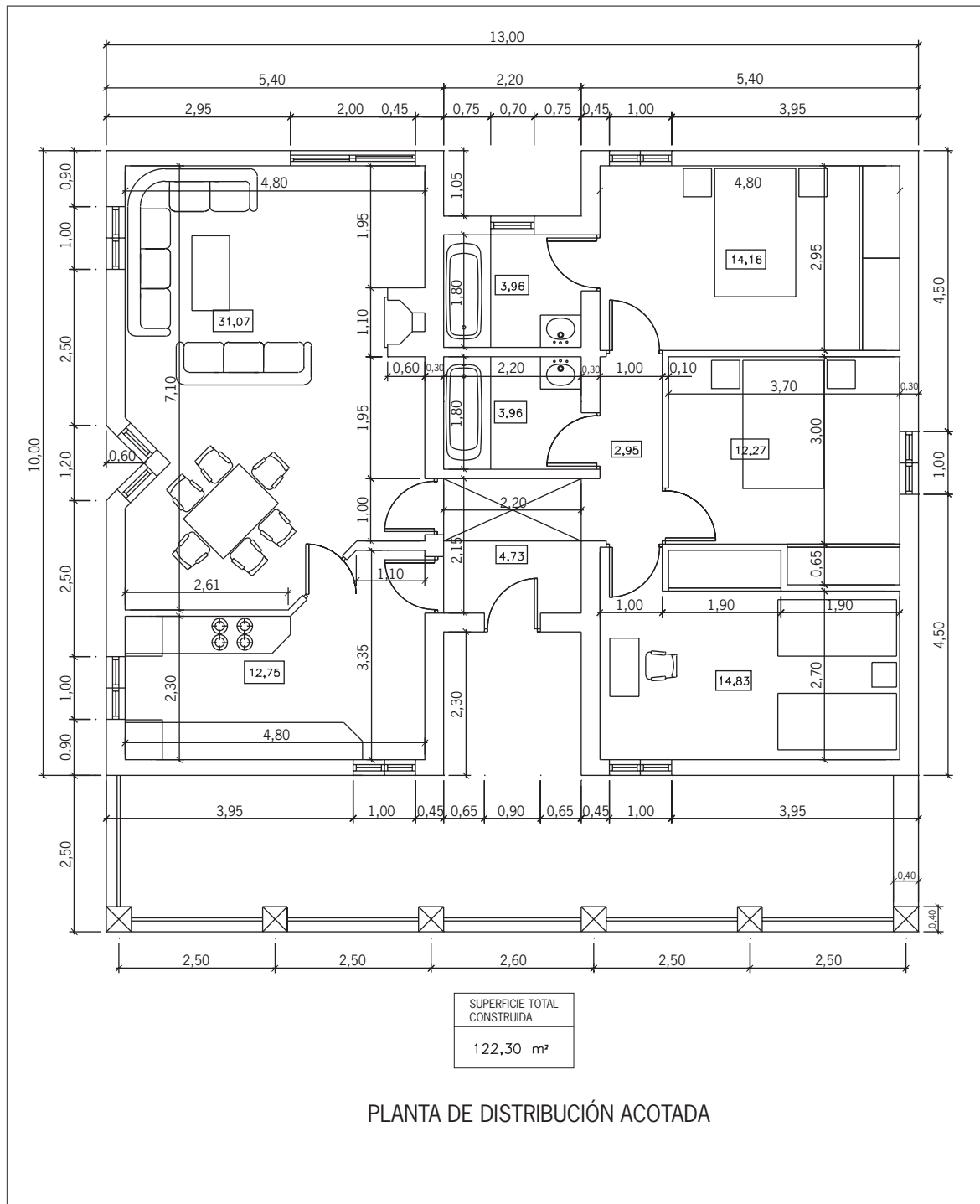


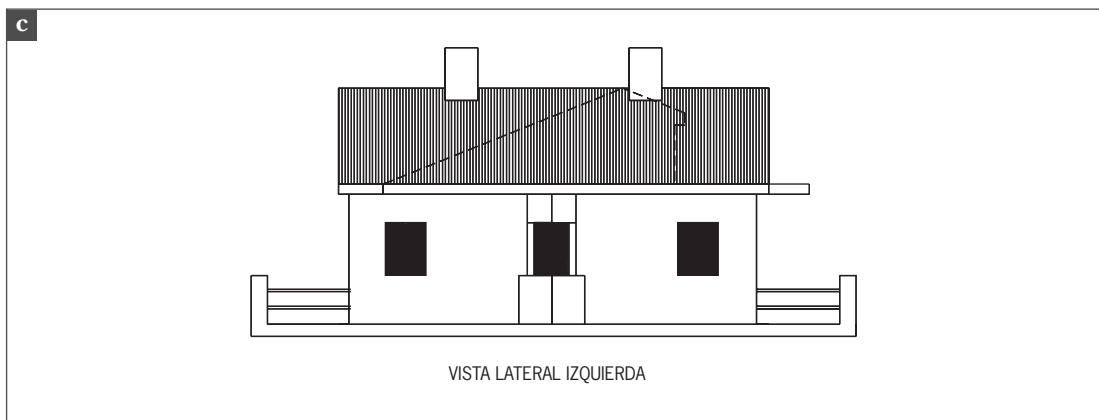
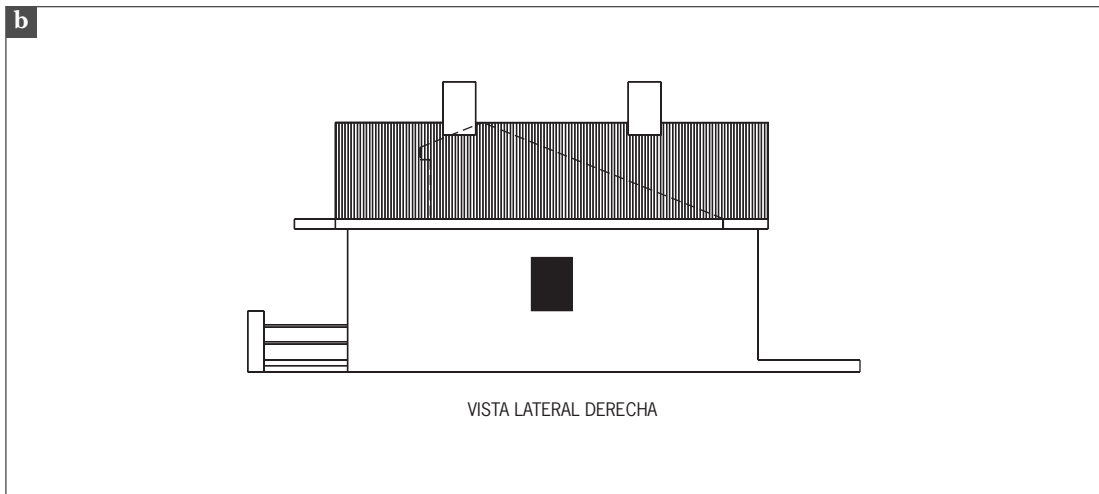
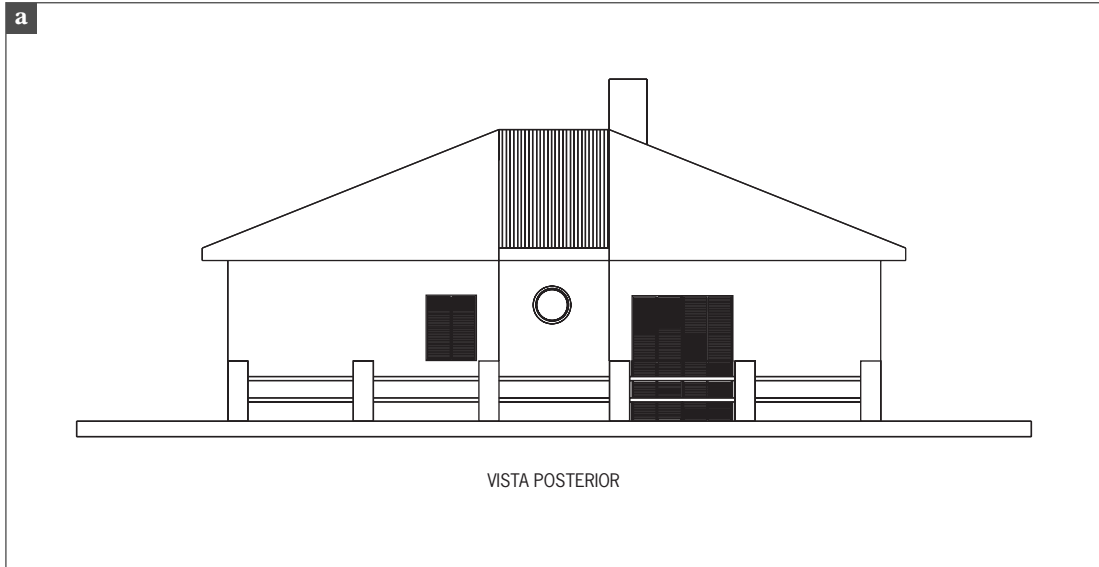
Unidad 11

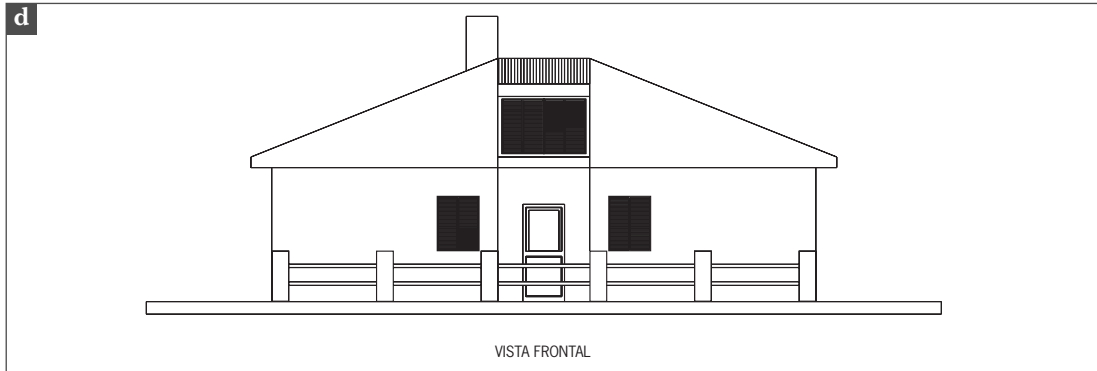
Proyección en arquitectura. Dibujo industrial. Normalización

1 a) y b)

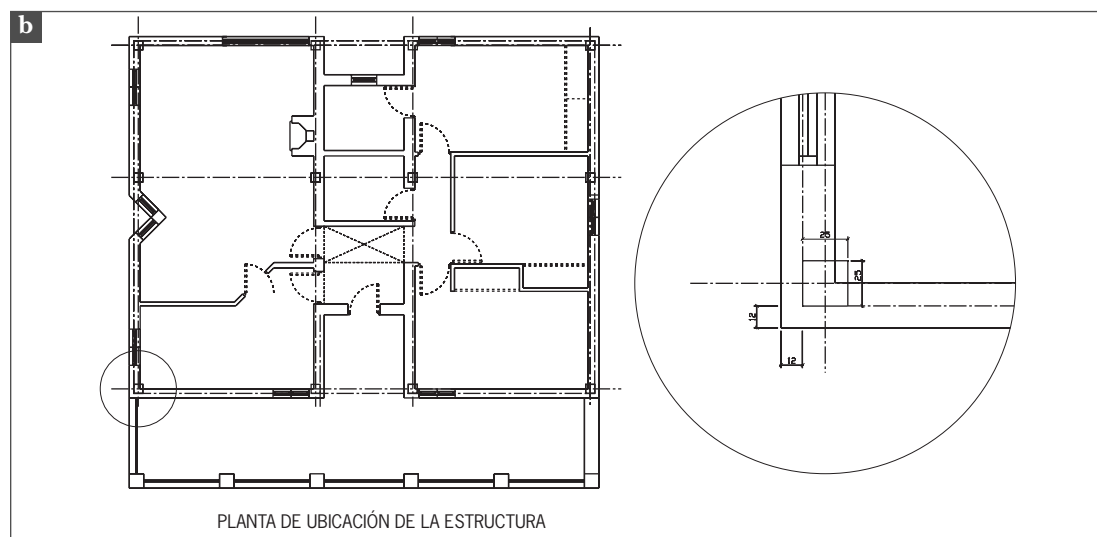
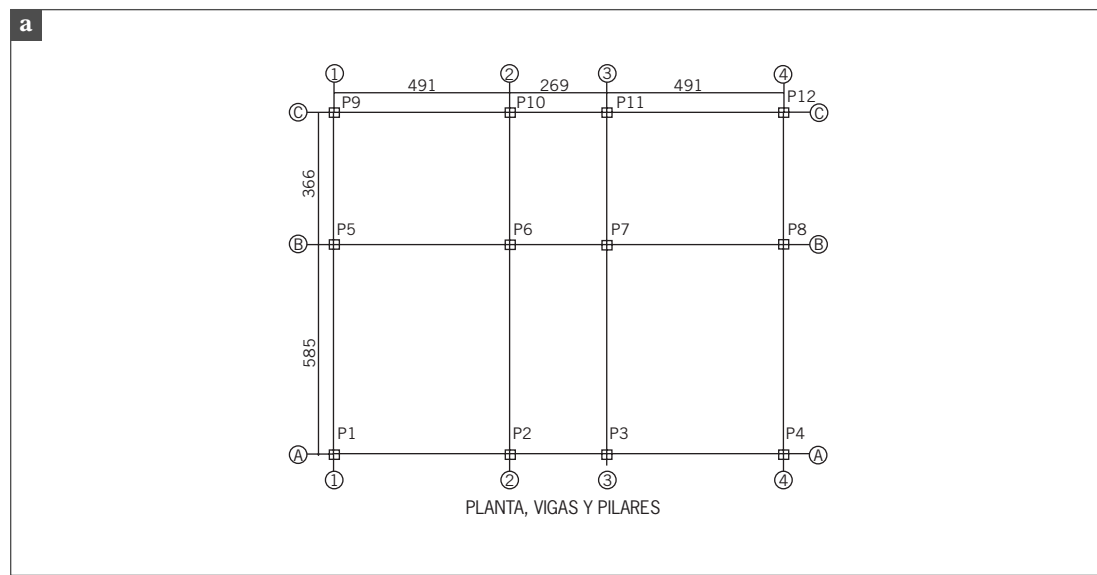


c)

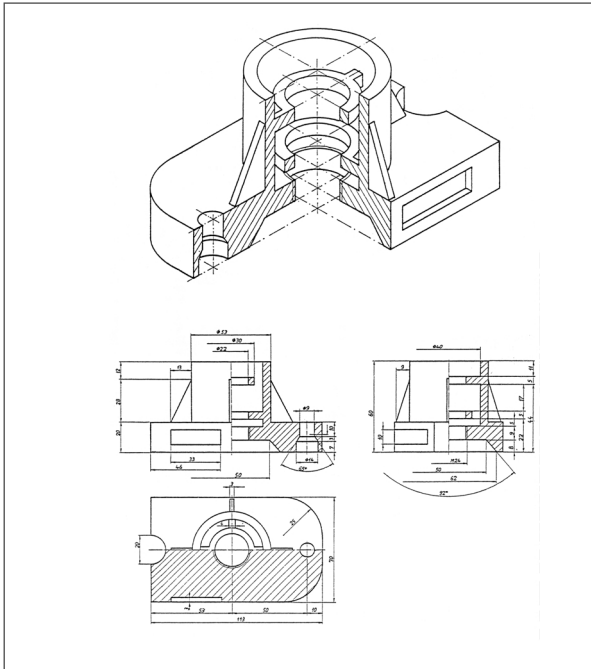




d)



3



4

a

| 3 | tapa | 1 | plástico | |
|----------------|--------------|----------|----------|-------|
| 2 | cuerpo | 1 | plástico | |
| 1 | soporte | 1 | plástico | |
| marca | denominación | cantidad | material | norma |
| modificaciones | | | | |

b

| 9 | boquilla | 1 | acero | |
|----------------|--------------------|----------|-------------------|-------|
| 8 | casquillo | 1 | acero | |
| 7 | tornillo | 1 | acero | |
| 6 | mando regulador | 1 | plástico | |
| 5 | arandela seguridad | 1 | acero | |
| 4 | regulador | 1 | aleación de cobre | |
| 3 | junta estanca | 2 | goma | |
| 2 | tapón cierre | 1 | goma | |
| 1 | cuerpo | 1 | acero | |
| marca | denominación | cantidad | material | norma |
| modificaciones | | | | |